



THOMAS SCOON - Visionary

Surrounded by heavy woods with stone strewn all around Northwood, New Hampshire still feels like a place that was just waiting for Tom to arrive. The artist finds inspiration in the passing of seasons and rhythms of the natural world. In the pitch darkness of night, the artist has been taking long exposure black and white photographs. Through his viewfinder, he discovered an aching beauty in the leafless branches of the towering Beeches and Oaks and was inspired to add a cast bronze element to his work. The bronze branches embrace his figures even as he tries to suggest that the figures are growing out and away, entwined and blossoming.

KEN SAUNDERS | GALLERY
2041 West Carroll Avenue, Suite C-320 | Chicago, IL 60612



Visionary, 2023, Cast Glass and Stone, 47 x 10 x 16 inches



Emerge, 2018, Cast Glass, Cast Bronze, Granite, Copper, Wood, Fused Glass, 38 x 17 x 11 inches



Crystal Companions, 2020, Cast Glass and Stone, Left: 26 x 5 x 4 inches, Right: 25 x 5 x 4 inches



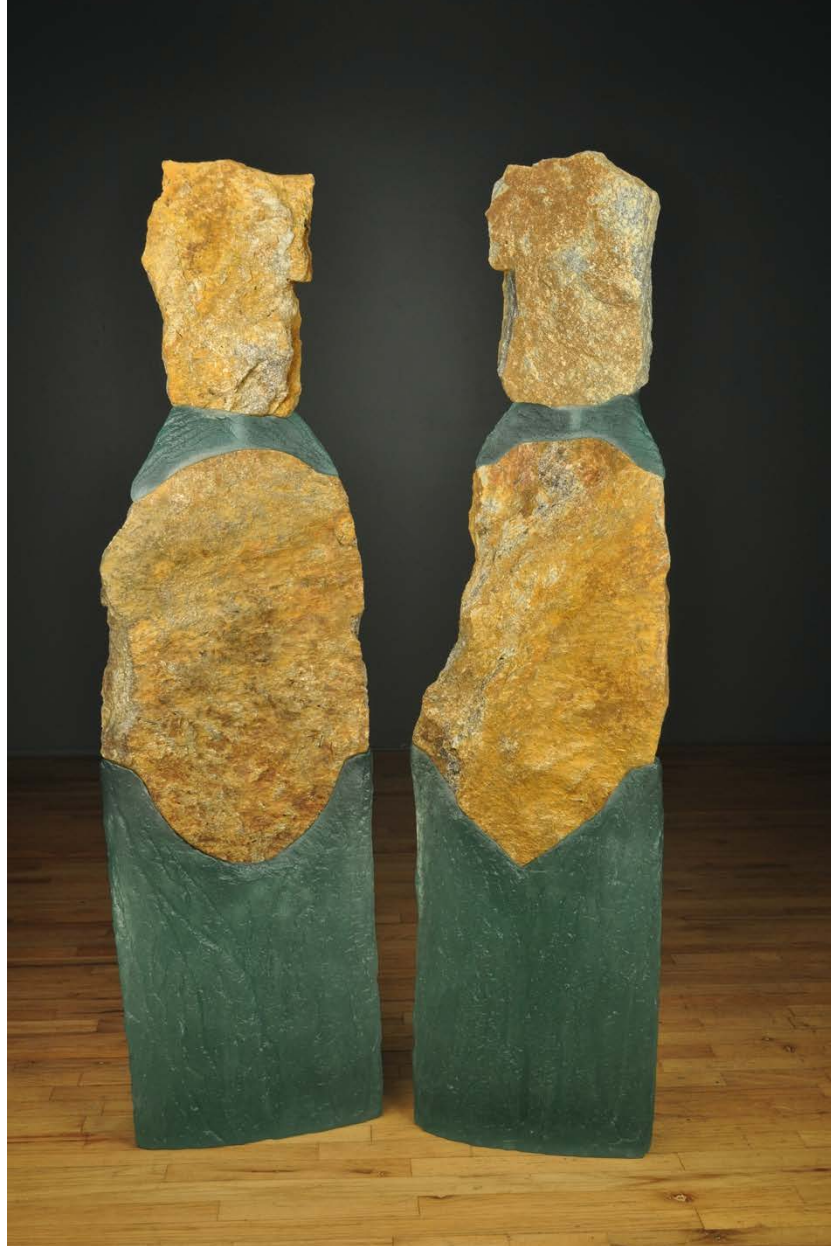
Auroras, 2019, Cast Glass and Stone, Left: 31 x 5 x 6 inches Right: 32 x 7 x 6 inches



Entwined, 2021, Copper, Bronze and Glass, 34 x 28 x 10 inches



Voyager, 2020, Cast Glass, Granite, Crushed Glass 20 x 23.5 x 6 inches



Companions, 2017, Cast Glass and Stone, Left: 60 x 17 x 8 inches. Right: 59 x 15 x 8 inches

KEN SAUNDERS | GALLERY
2041 West Carroll Avenue, Suite C-320 | Chicago, IL 60612