

TIM SHAW *Untamed*

“Sometimes it’s a long and arduous process to even get the glass to do what I want it to do – and it’s ultimately in the hands of the glass gods really. I think that’s what I love about it the most though...” Tim Shaw



Born in Cyprus and raised in Yorkshire, Tim’s artistic practice has been informed by techniques developed around the world. He has three degrees in glassblowing. Attaining his BA (Hons) from North Staffordshire Polytechnic in the UK in the early 80’s, he went on to study at the avant-garde Gerrit Rietveld Academie in Amsterdam, where he continued to develop and experiment creating his unique style. Upon his return to the United Kingdom Tim established a hot glass workshop in London even as he was invited to undertake his second MA at the prestigious Royal College of Art in London.

Tim is currently based with his family and hot glass studio in the stringy bark forests of the Adelaide Hills in Australia.

KEN SAUNDERS | GALLERY

2041 West Carroll Avenue, Suite C-320

Chicago, IL 60612

312-573-1400

ken@kensaundersgallery.com



Murmuration
Blown Glass, 17 x 12 x 4 inches



Kiluaeu

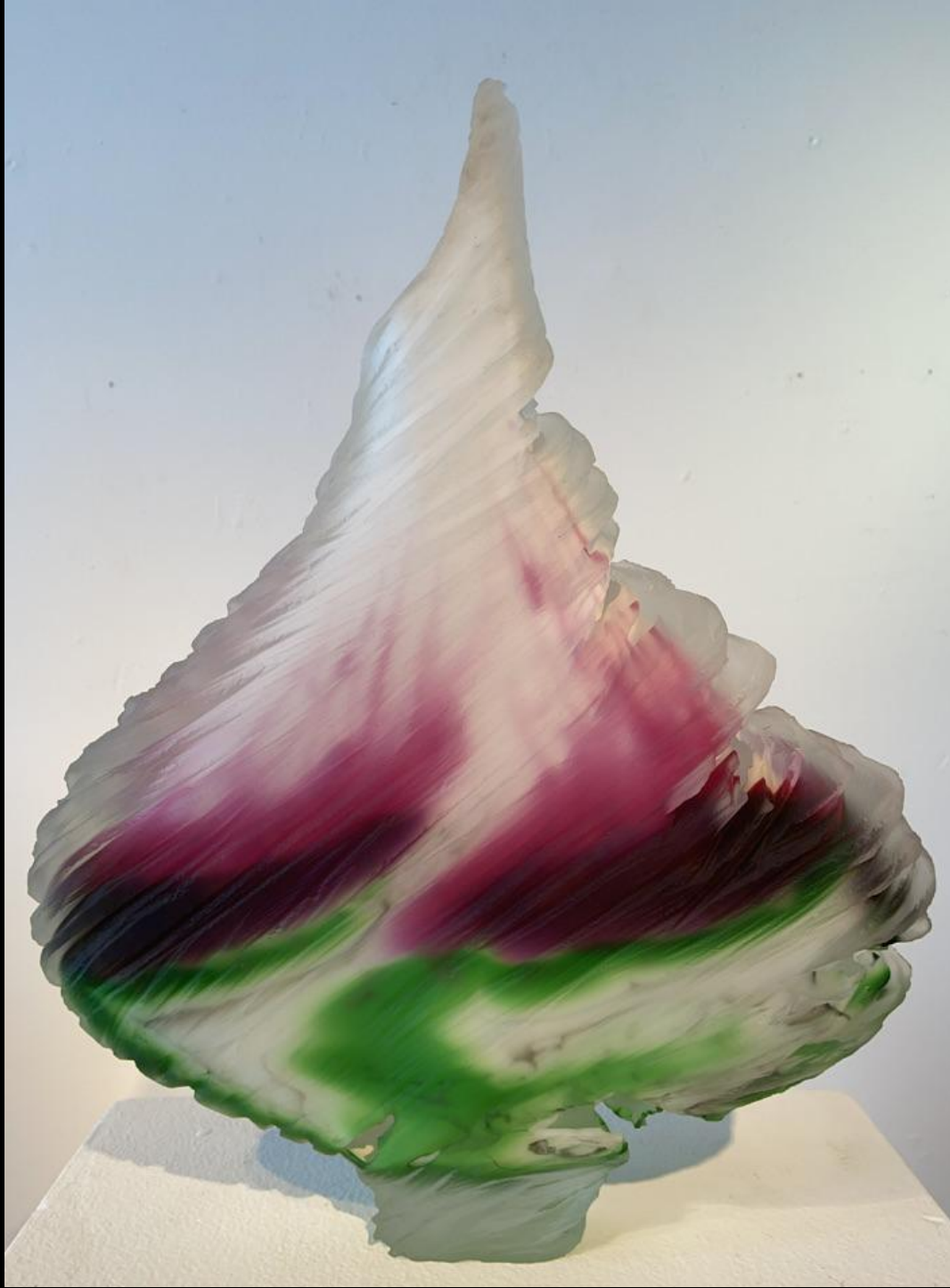
Blown Glass, 13 x 12 x 2.5 inches



Southern Skies
Blown Glass, 16 x 10 x 3 inches



Midwest
Blown Glass, 10 x 10.5 x 3 inches



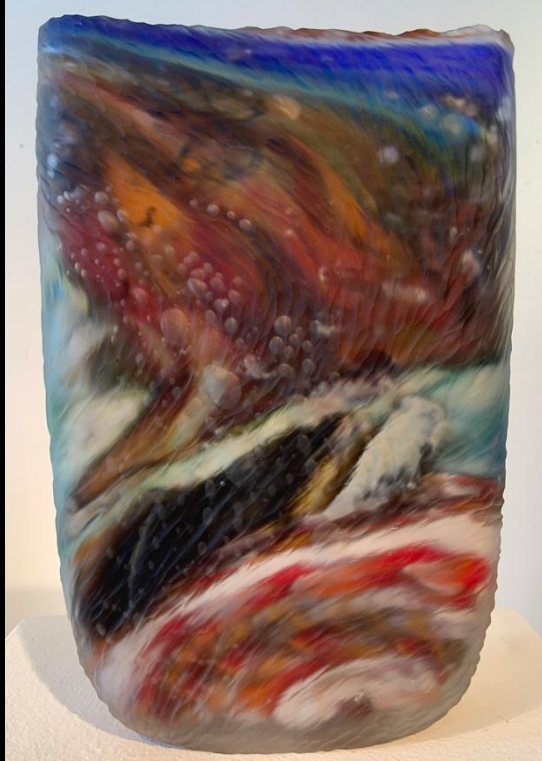
Kissing Flowers I
Blown Glass, 16 x 11 x 3 inches



Kissing Flowers II
Blown Glass, 12 x 16 x 3 inches



Island Studies, (two sides)
Blown Glass, 9.5 x 9.5 x 2.5 inches



Desert (two sides)
Blown Glass, 15 x 9 x 3 inches

312-573-1400
ken@kensaundersgallery.com